

## Discover

People's Collection Wales features thousands of items. Using the Discover section of the website, you can search for items based on location, time period and area of interest. You can also search using keywords or tags.

### Profile

Setting up a profile on People's Collection Wales will allow you to make the most of the site. Upload your own content, add items to Favourites and create stories and collections. You can Follow contributors that interest you and can gain followers in return. You can also monitor comments, favourites and shares on your items. Popular content may be chosen as a Featured Discovery on the website.

### My Favourites

My Favourites is where you can store the items you find most fascinating from across the collection. Simply click on the heart icon to add the item to your Favourites. Items stored in your Favourites can be used to create stories, trails and collections.

### Stories

A story can contain items published by you and items contributed by others that you've added to your Favourites. Stories are a great way to share your knowledge of an area or a particular event in history.

### Trails

Trails are created to demonstrate a journey, be it a historical journey or a trip that can be followed by car or on foot. Trails often explore a particular theme, for example a trail may trace the location of churches in your town. You can create your own trails, mapping the route and adding items as you go.

Follow a trail and discover the historical landscape of your area.

### Maps

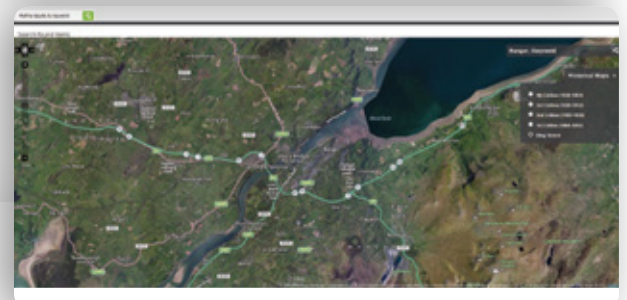
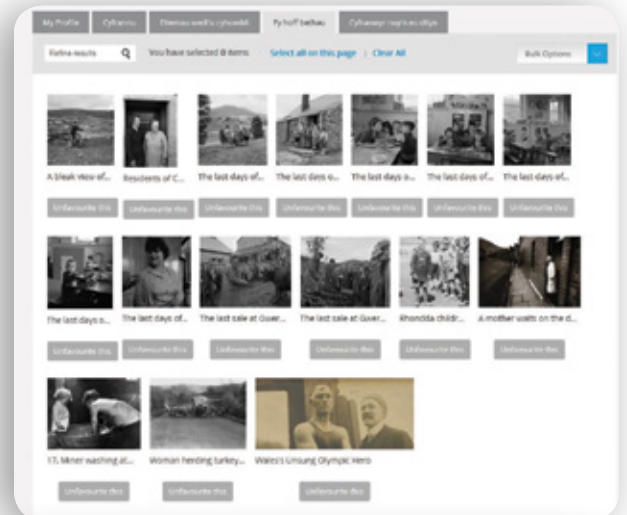
Using the Locate section of the website you can explore Ordnance Survey maps, both current and historical, pinpointing your area of interest based on location. Search the maps dating from 1868 to modern day and watch as the landscape of the past unfolds before your eyes.

### Help Centre

Unsure of how to create a story? Need some guidance on mapping a trail? The Help Centre contains a wealth of information to guide you through the process of discovering and contributing content to People's Collection Wales. There's also handy Cheat Sheets that give step by step instructions on how to utilise all aspects of the collection.



Irene Steer and the GB female squad, with chaperone copyright *Following the Flame*



Paul Robeson  
Visiting Tiger  
Bay 1949  
copyright South  
Wales Miner's  
Institute

